

HereEast

Retail and leisure

Exciting new spaces at
London's home for making



Discover what's happening here

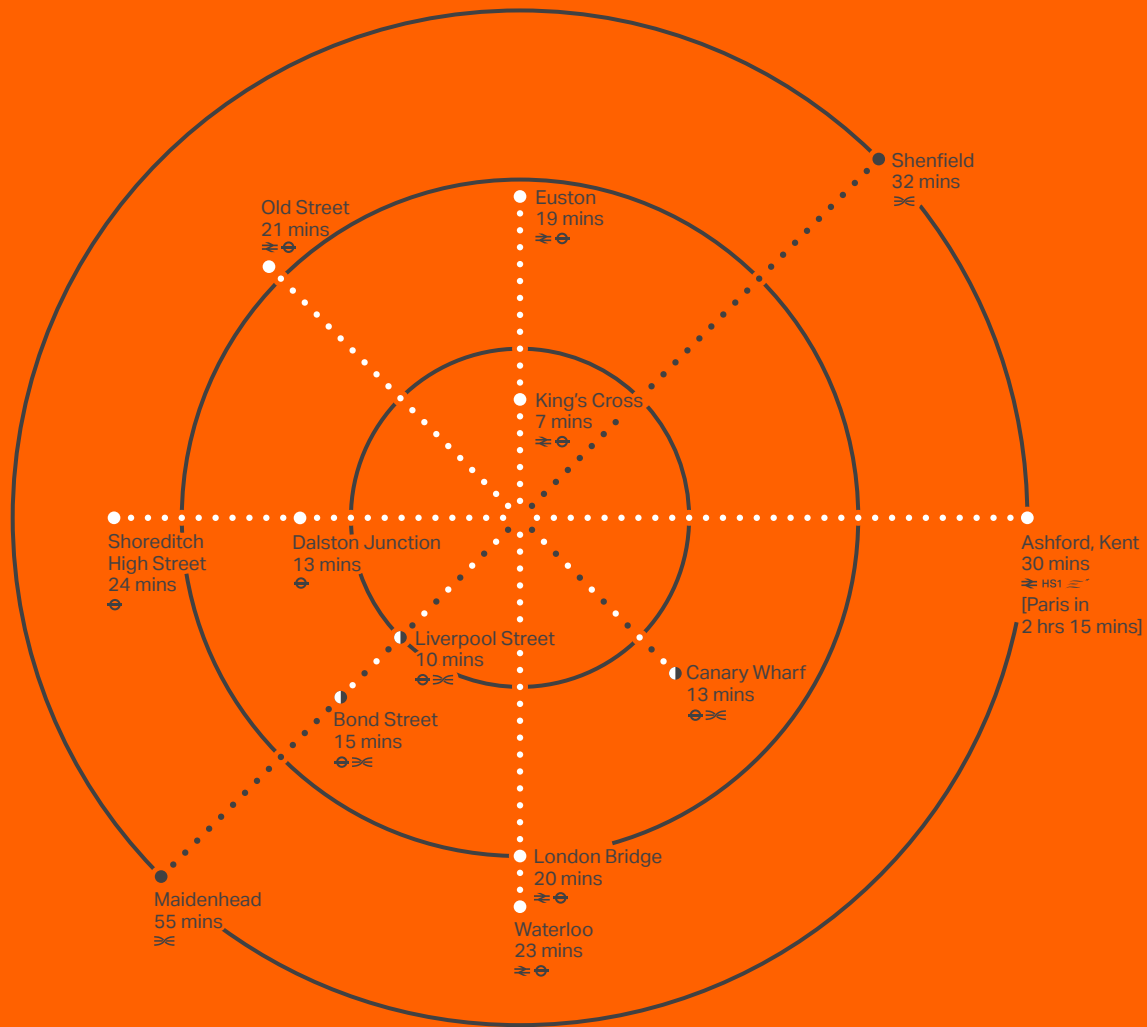
Here East is London's home for making – for innovators, in companies big and small, who are disrupting old ways of thinking and working to make the future better. With five distinct areas across the 1.2 million sq ft campus, there is exceptional scope and opportunity here for interesting and independent-spirited operators.

Bridging the creative, buzzy and cutting edge community that is Hackney Wick with the energy and ambition of Queen Elizabeth Olympic Park, Here East is at the centre of one of London's most exciting and progressive areas.





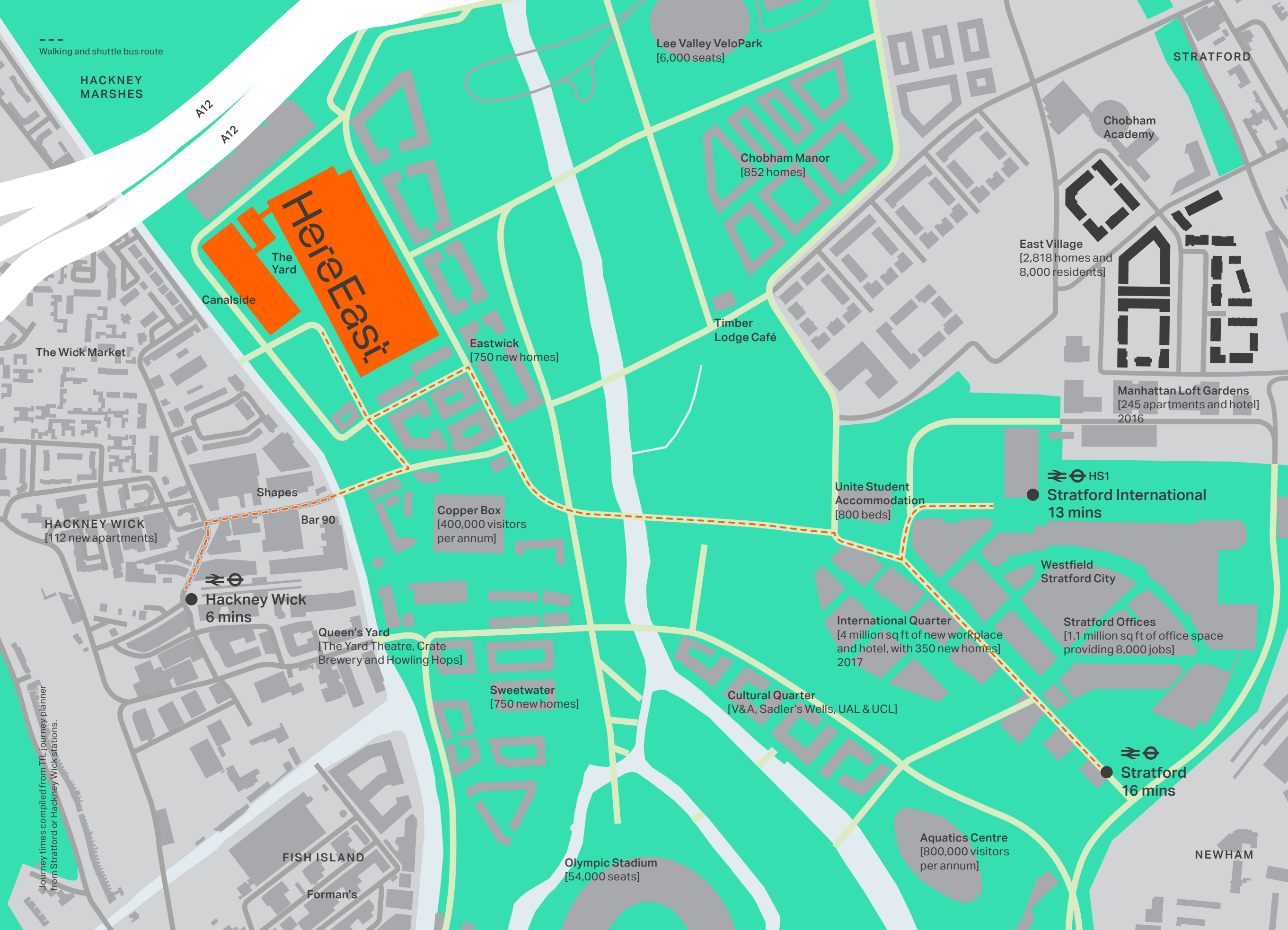
Where is here?



Rail and tube links provide easy access from Hackney Wick and Stratford to major hubs across London, while Crossrail, HS1, and direct links to mainland Europe will ensure even quicker and easier travel in the future.

Journey times compiled from TfL journey planner from Stratford or Hackney Wick stations.





Walking and shuttle bus route

HACKNEY MARSHES

A12

A12

Lee Valley VeloPark
[6,000 seats]

STRATFORD

Chobham Academy

Chobham Manor
[852 homes]

East Village
[2,818 homes and
8,000 residents]

Manhattan Loft Gardens
[245 apartments and hotel]
2016

Here East

The Yard

Canalside

The Wick Market

Eastwick
[750 new homes]

Timber
Lodge Café

Shapes

Bar 90

Copper Box
[400,000 visitors
per annum]

Unite Student
Accommodation
[800 beds]

HS1
Stratford International
13 mins

HACKNEY WICK
[112 new apartments]

Hackney Wick
6 mins

Queen's Yard
[The Yard Theatre, Crate
Brewery and Howling Hops]

Sweetwater
[750 new homes]

Cultural Quarter
[V&A, Sadler's Wells, UAL & UCL]

International Quarter
[4 million sq ft of new workplace
and hotel, with 350 new homes]
2017

Westfield
Stratford City

Stratford Offices
[1.1 million sq ft of office space
providing 8,000 jobs]

Stratford
16 mins

Aquatics Centre
[800,000 visitors
per annum]

NEWHAM

Olympic Stadium
[54,000 seats]

FISH ISLAND

Forman's

Journey times compiled from TfL journey planner
from Stratford or Hackney Wick stations.

What is here?



Gantry

Theatre

Undercroft

The Yard

Canalside

Five distinct areas

⁰¹ Canalside
28,400 sq ft

—
Bars, shops and restaurants along the Lee Canal with landscaped gardens and outdoor seating.

⁰² The Yard
33,600 sq ft

—
A new home for makers, with industrial-sized spaces for those pioneering the latest in retail innovation.

⁰³ Gantry
13,800 sq ft

—
Places for artists, designers and creatives to meet and make.

⁰⁴ Undercroft
13,700 sq ft

—
A flexible, programmable event space beneath the Theatre.

⁰⁵ Theatre
33,400 sq ft

—
A cavernous space for events and sharing knowledge, this special cultural space has great scope for opportunity.

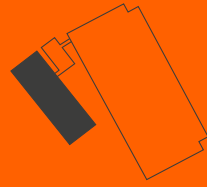
Here East has five distinct and exciting areas. Providing a showcase for this campus community, retail here brings everyone together, making an innovative destination unlike anywhere else.







01 Canalside



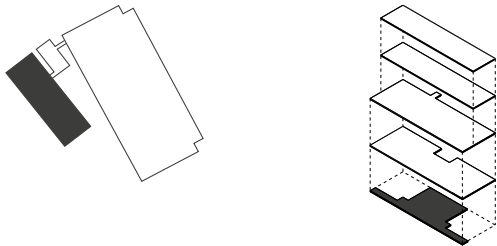
Next to the waterway, with landscaped gardens, independent maker-retailers, cafés, bars and restaurants make the Canalside a great location to meet, eat and relax.

The terrace offers views of East London and is a space for exchange. An urban orchard will also provide a source of fresh produce that will be transformed into delicious food and drink on-site.

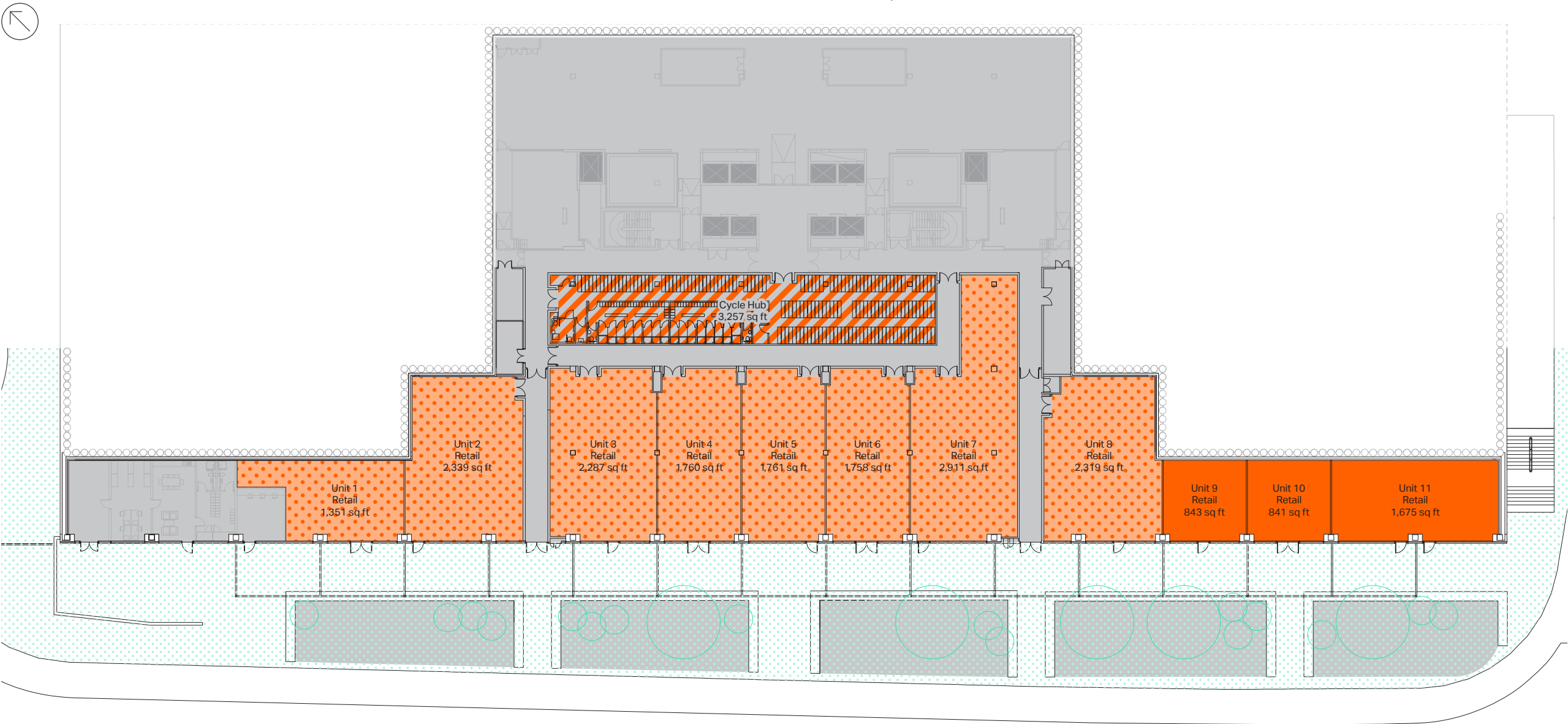




Canalside
Lower ground floor



- Retail: Available
- ▨ Let or under offer
- ▨ Cycle Hub



Unit 1 Mother 1,351 sq ft	Unit 2 The Bicycle Man 2,339 sq ft	Unit 3 The Breakfast Club 2,287 sq ft	Unit 4 Randy's Wing Bar 1,760 sq ft	Unit 5 Gotto 1,761 sq ft	Unit 6 Shane's on Canalside 1,758 sq ft	Unit 7 Mason & Company 2,911 sq ft	Unit 8 Four Quarters 2,319 sq ft
---------------------------------	--	---	---	--------------------------------	---	--	--

Canalside

Lower ground floor: Who's here?

Unit 1 Mother

Cold-pressed juices and smoothies made from local, organic produce – raw goodness delivered fresh.

Unit 2 The Bicycle Man

The Bicycle Man – everything for the urban rider. Bikes, accessories, parts and repairs. Our Cytech-trained mechanics can work on all types of bikes. Different levels of servicing available.

Unit 3 The Breakfast Club

A family caff business doing a mean all-day food and drink trade. Brunches, lunches and evening meals too.

The Bicycle Man



Randy's Wing Bar



The Breakfast Club



Four Quarters



Gotto



Unit 4 Randy's Wing Bar

After a number of successful pop-ups, this will be their first home, serving chicken wings and good times.

Unit 5 Gotto

A modern Italian trattoria serving a daily changing seasonal menu of authentic dishes alongside home-made vermouth, craft beer and wines from small Italian producers.

Unit 6 Shane's on Canalside

Focused towards showcasing the diversity of locally sourced British game and meat, our food is seasonal with a mission to retain quality and freshness. Foraging from the local area, wines, spirits and beers are from small independent suppliers. We are on a mission to make quality accessible to all.

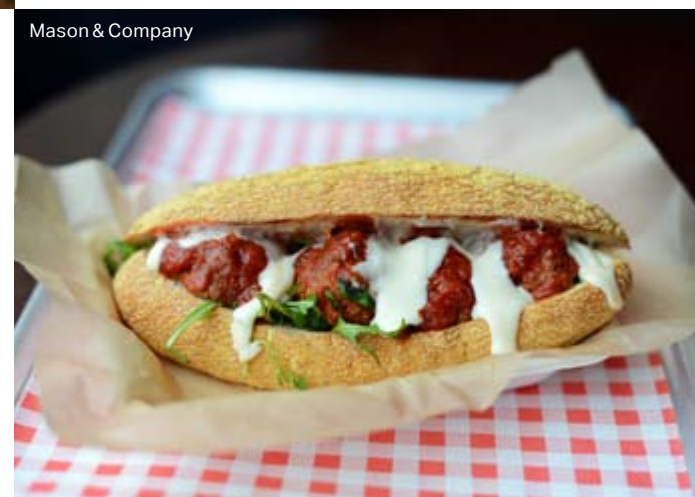
Unit 7 Mason & Company

Mason & Company is a new craft beer bar from the team behind Hackney's Five Points Brewing Company. Showcasing the very best of London's craft brewing scene, the kitchen is run by acclaimed street food operator Capish.

Unit 8 Four Quarters

Peckham's Four Quarters is one of London's most talked about bars and after two successful years they are ready to bring their own unique brand of nostalgic fun to East London. Around 20 lovingly restored classic arcade cabinets and a selection of retro consoles will keep you entertained for hours, with a focus on top quality cocktails using locally sourced and seasonal ingredients, as well as a top selection of wine, spirits and craft beer, you will enjoy the drinks just as much!

Mason & Company

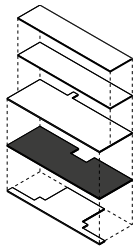
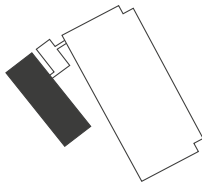


Shane's on Canalside



Canalside

Ground floor



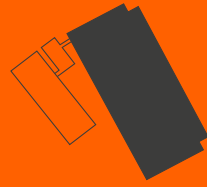
- Retail: Available. Opportunity as one
- Office
- Office Reception
- Theatre Reception / Foyer

These units have a floor-to-ceiling height of 5 metres so there will be potential to insert mezzanines or split units



02 The Yard

03 Gantry



The Yard is the centre of Here East campus life – a vibrant, architecturally landscaped place to meet, enriched with dynamic artworks to inspire daily interaction. It has a key role in providing an open event space for the free expression of the community.

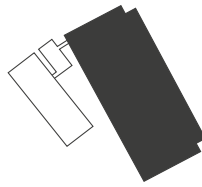
Here East's office receptions also concentrate here, alongside the retail spaces that line the edge of The Yard.



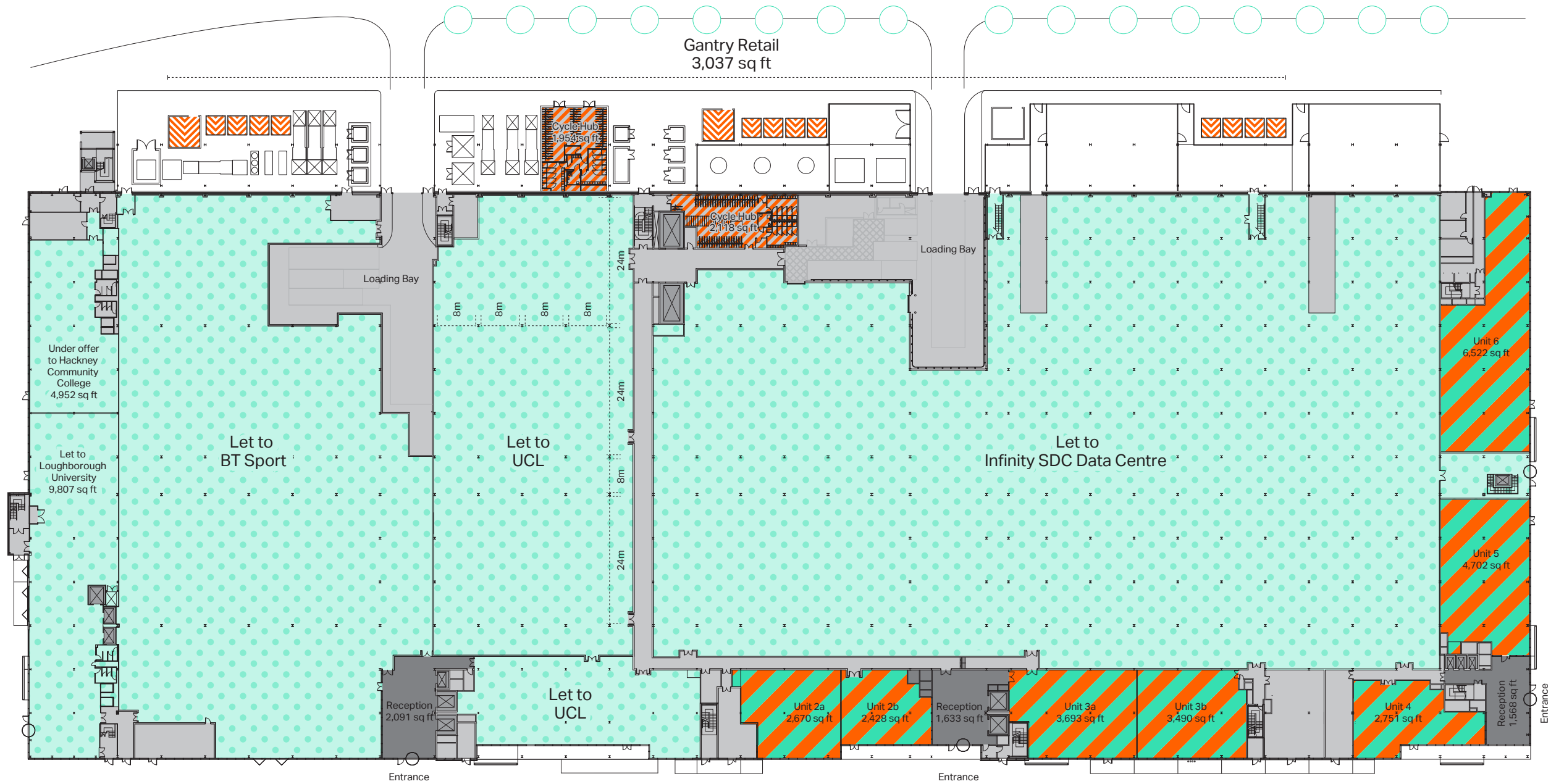


The Yard and Gantry

Ground floor



- ✂ Gantry Retail: 3,037 sq ft
- Let or under offer: 225,218 sq ft
- Office / Retail: 26,256 sq ft
- Office Reception: 5,292 sq ft
- ✂ Cycle Hub: 4,072 sq ft





04 Undercroft 05 Theatre



1 unit available

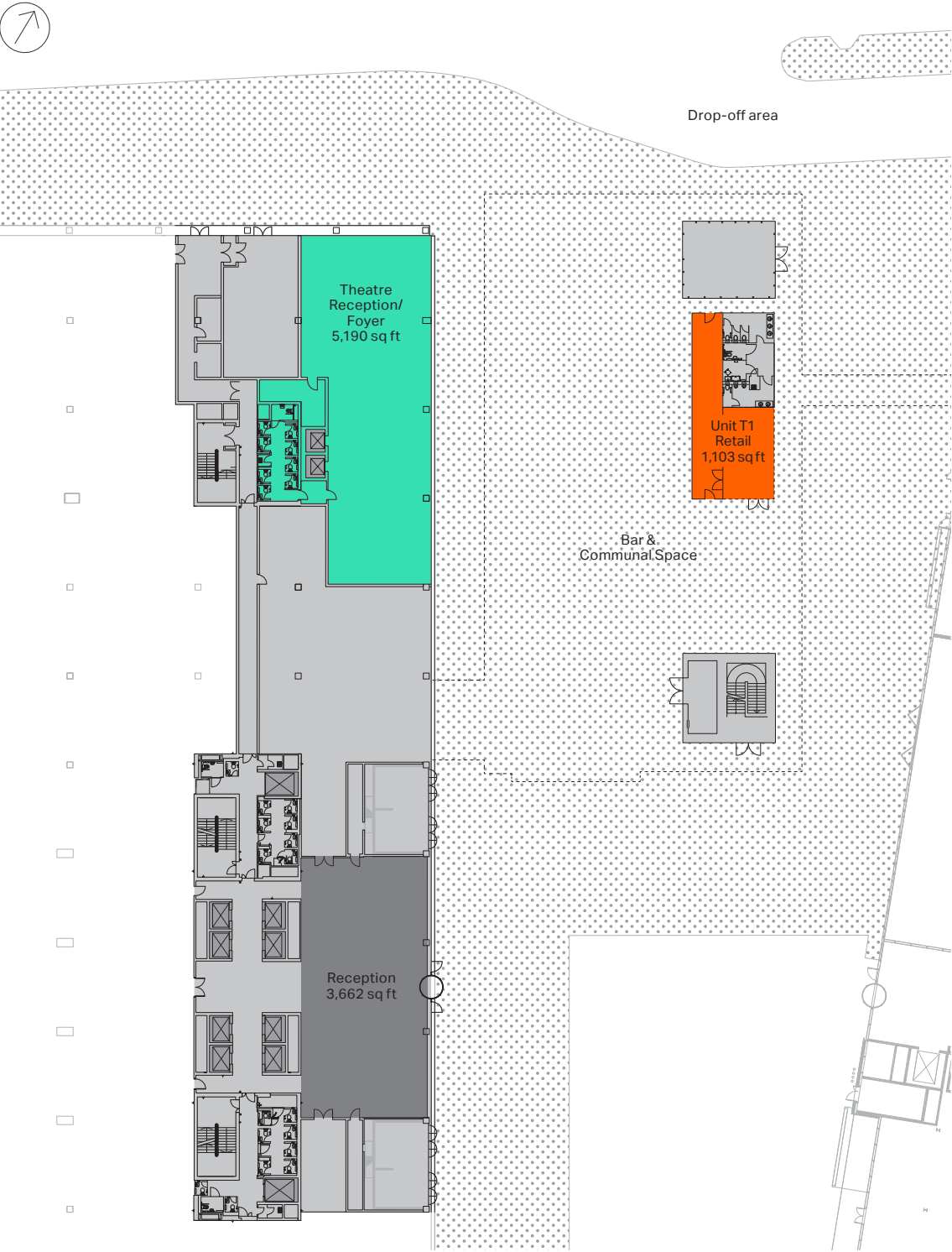
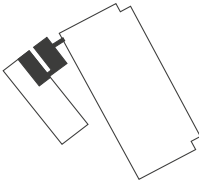
The Theatre is the events space for Here East, with bold architecture reflective of an inventive and innovative cultural programme.



Undercroft & Theatre

Ground floor

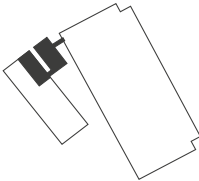
- Undercroft Retail: Available
- Theatre Reception



Theatre

First floor

- Theatre Restaurant / Break-out and Auditorium: 33,393 sq ft



Here is innovation,
collaboration, imagination.
Here is Here East.

@hereeast
hereeast.com
#madehere

Retail Agents

—

Matt Ashman
matt.ashman@eur.cushwake.com
+44 [0] 20 7152 5495

Charlotte Wild
charlotte.wild@eur.cushwake.com
+44 [0] 77 9380 8603

Craig Fisher
craig@cfcommercial.co.uk
+44 [0] 20 3370 4334

Daisy Rees
daisy@cfcommercial.co.uk
+44 [0] 20 3216 3913

Misrepresentation Act: Whilst the statements contained in these particulars are given in good faith and as a general guide to the property they do not form any part of an offer or contract. Neither the vendor, lessor or any person in the employment of the agents has any authority to make or give any representation or warrant whatsoever in relation to this property. Interested parties must satisfy themselves by inspection or other means as to the correctness of these particulars. August 2016.

EK

